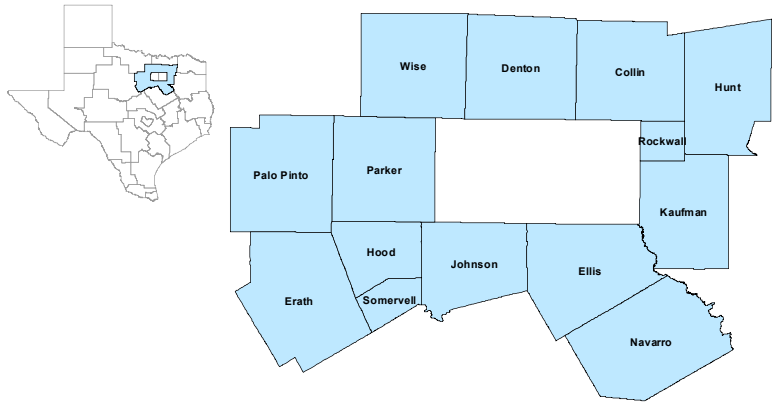


## North Central Workforce Development Area

June 2019



WDA Labor Force Statistics				
	Jun-19	May-19	Jun-18	Yearly Change
Civilian Labor Force	1,574,666	1,561,142	1,536,479	38,187
Employed	1,525,456	1,521,014	1,480,703	44,753
Unemployed	49,210	40,128	55,776	-6,566
Unemployment Rate	3.1%	2.6%	3.6%	-0.5%

Texas Labor Force Statistics				
	Jun-19	May-19	Jun-18	Yearly Change
Civilian Labor Force	14,043,429	13,966,995	13,866,660	176,769
Employed	13,542,322	13,558,482	13,281,765	260,557
Unemployed	501,107	408,513	584,895	-83,788
Unemployment Rate	3.6%	2.9%	4.2%	-0.6%

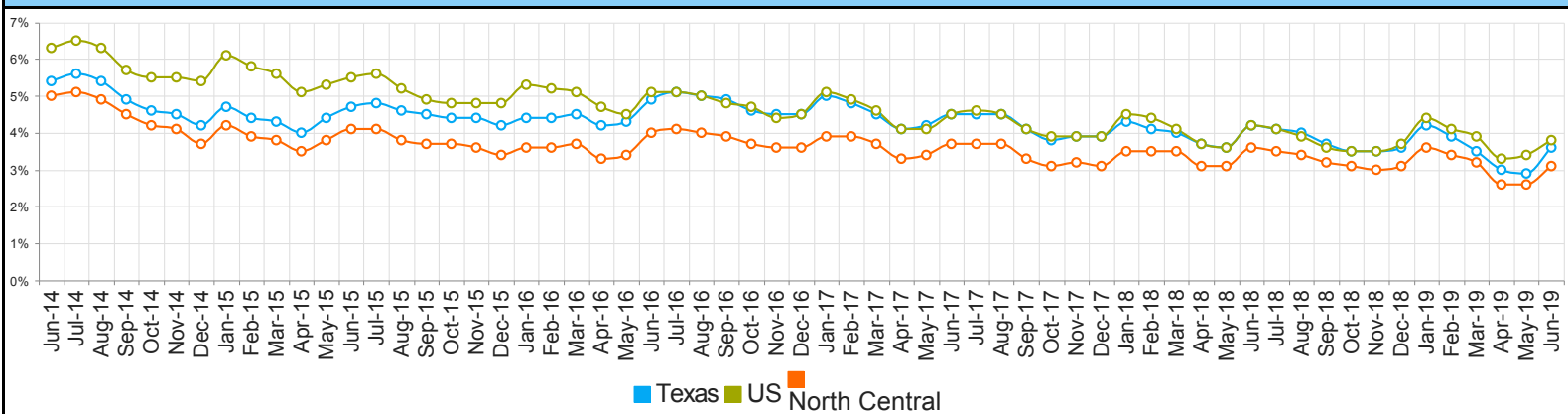
  

US Labor Force Statistics				
	Jun-19	May-19	Jun-18	Yearly Change
Civilian Labor Force	164,120,000	162,655,000	163,277,000	843,000
Employed	157,828,000	157,152,000	156,465,000	1,363,000
Unemployed	6,292,000	5,503,000	6,812,000	-520,000
Unemployment Rate	3.8%	3.4%	4.2%	-0.4%

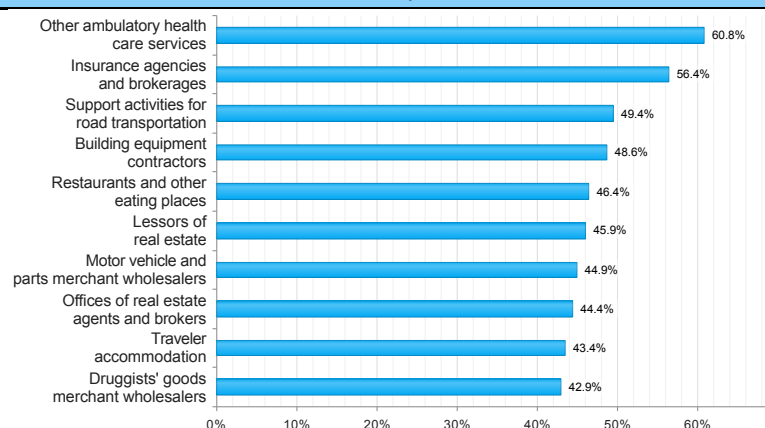
  

Continued Claims for the Week of the 12th				
	Jun-19	May-19	Jun-18	Yearly Change
WDA	9,801	9,016	10,085	-284
Texas	100,670	91,197	101,427	-757

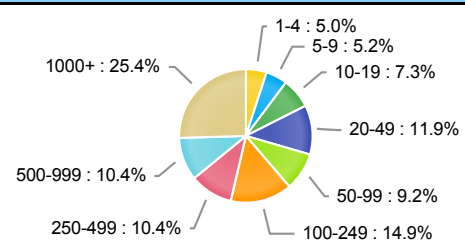
## Historical Unemployment Rates



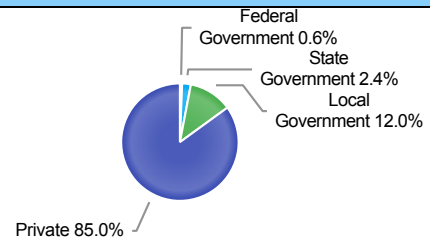
## Projected Top Ten Fastest Growing Industries in WDA (% Growth 2016-2026)



## Employment by Size Class (4th Quarter 2018)



## Employment by Ownership (4th Quarter 2018)



## Average Weekly Wage (4th Quarter 2018)

	Q4 2018	Q3 2018	Q4 2017	Quarterly Change	Yearly Change
WDA	\$1,096	\$1,040	\$1,065	\$56	\$31
Texas	\$1,148	\$1,064	\$1,109	\$84	\$39
US	\$1,144	\$1,054	\$1,109	\$90	\$35

## Employment by Industry (4th Quarter 2018, Percent Change)

Industry	Employment	% of Total	% Quarterly Change	% Yearly Change
Natural Resources and Mining	12,489	1.3%	-0.1%	2.0%
Construction	57,243	5.8%	-1.4%	6.0%
Manufacturing	87,302	8.9%	0.9%	5.7%
Trade, Transportation and Utilities	202,242	20.5%	2.2%	0.4%
Information	21,533	2.2%	-0.9%	-0.4%
Financial Activities	67,500	6.9%	0.2%	2.6%
Professional and Business Services	131,243	13.3%	0.9%	5.3%
Education and Health Services	233,795	23.7%	6.0%	1.9%
Leisure and Hospitality	120,034	12.2%	-2.0%	5.1%
Other Services	26,481	2.7%	-0.3%	3.8%
Public Administration	25,154	2.6%	0.0%	1.5%

## Employment by Industry (4th Quarter 2018)

